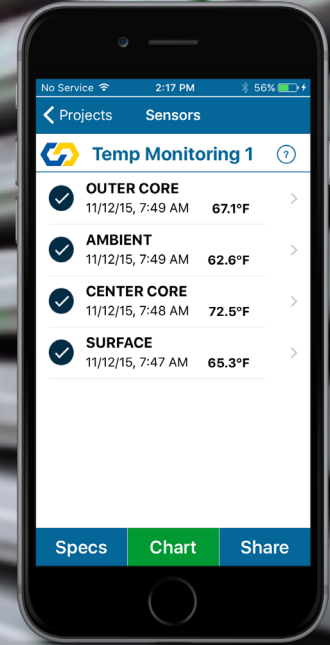




COMMAND CENTER FOR PRECAST CONCRETE

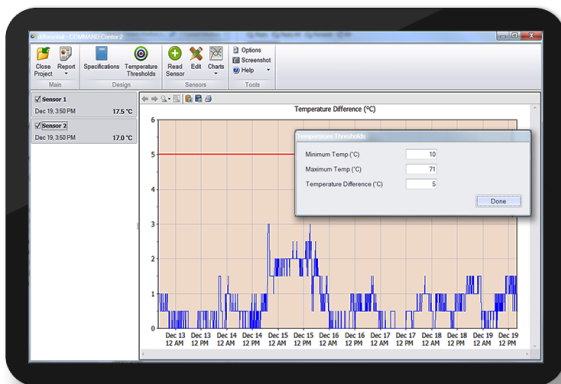
Measure and record temperature over time during curing.

Use COMMAND Center to log reliable, uninterrupted concrete temperature data.



When do I use it?

- To identify maximum and minimum concrete temperatures in order to reduce the risk for DEF and evaluate curing procedures in hot and cold weather.
- To measure and record the time and temperature relationship for concrete and ambient conditions.
- To determine temperature differentials between defined locations within the element.



Why COMMAND Center?

- Log data at user-defined intervals in the sensor, which lasts at least two years.
- No external data logger or power required.
- Rugged sensor cables only have to extend beyond the element, reducing workplace hazards.
- View and analyze peak temperature data for individual sensors or multiple sensors at once.
- View and analyze temperature differentials between sensors.
- Use the same sensor to measure temperature and evaluate strength using the maturity method.
- Report data in secured, professional PDF formats.
- Achieve NPCA QC Manual and PCI Manual for QC requirements.



GET COMMAND CENTER TODAY

To learn more about how COMMAND Center can improve your precast operation, visit www.COMMANDCenterConcrete.com or call +1 (888) 451 6233.



Connect with us.



Proudly assembled in the USA.

© The Transtec Group, Inc. | 6111 Balcones Drive | Austin, TX 78731 USA



COMMAND CENTER
CONCRETE TEMPERATURE & MATURITY SYSTEM